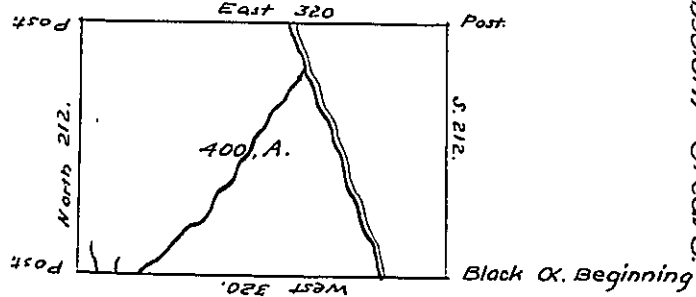


Nathl Murdock  
c 212-118

Douglass' Dit Line.



c 187-176

822-851  
Peter Dick

A Draught of a tract of Land Surveyed the 24<sup>th</sup> day of September 1794  
for Philip Regan by Virtue of his improvement dated the 23<sup>d</sup> day of the Same  
Month. Situate North & West of the River Ohio in District N<sup>o</sup>g. In Alleghany  
County on the Waters of Conguennesing Creek Containing four Hundred  
Acres & Allowance of Six p<sup>c</sup> Cent.

Jon<sup>d</sup> Leet, D.S.

To Daniel Brodhead Esq<sup>e</sup>  
Surveyor General.

IN TESTIMONY that the above is a copy of the original remaining on file in  
the Department of Internal Affairs of Pennsylvania, made  
conformably to an Act of Assembly approved the 16th day of  
February, 1833, I have hereunto set my Hand and caused  
the Seal of said Department to be affixed at Harrisburg,  
this twenty first day of August 1906.

*Joach B. Brown*  
Secretary of Internal Affairs.